



HXWLCC

HXWLCC is a robust stainless steel meter cabinet series, suitable for LV metering applications. Its combination with metering, sampling and protection objects, represents a reliable compact solution.

Main Applications:

- ❖ C&I customer metering, management;
- ❖ Boundary meter, Line loss analysis;

Feature:

- ❖ Load control remotely;

LV Metering system For C & I Customer
(100A/200A/300A/400/500A/600A)

HXLCC

HXLCC is a series of perfectly designed meter cabinet.

HXLCC series of meter cabinets are made of stainless steel with high level of anti-corrosive, dust proof, rust proof, water proof, ultra violet stabilized and flame retardant which make them ideal for both indoor and outdoor mounting. With reasonable design, they have more internal space to install high accuracy meter, communication modem, CT and MCB etc for different type of application. Sealable and lockable cabinet door, combined with open door detecting sensor, they support the high level of anti-tamper ability. Meter cabinet from this series can be mounted on ground, on pole or on wall.

HXLCC series of meter cabinets fulfill requirements of IEC60529 standard



MAIN FEATURES

High Protection Level

- o High level dust and water proof
- o Dust proof
- o High temperature resistance
- o Anti-corrosive
- o UV stability
- o Resistant against vibration
- o Flame retardant

Anti-tamper

- o Cabinet door seals
- o Cabinet door lock
- o Door-open detection sensor

Integration

- o With direct or indirect meters (accuracy class 0.5S , 0.2S)
- o With current transformers (100A to 600A)
- o With standard MCCB to protect
- o With remote communication via GPRS
- o With remote load control(Connect or disconnect)

Flexible Installation

- o Ground / Wall / Pole mounted
- o Suitable for all regular cable sizes

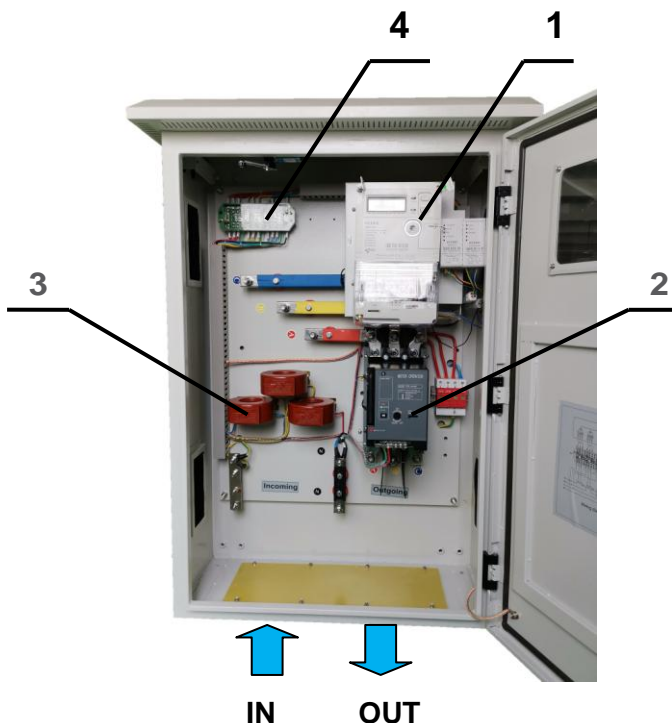
Accessibility

- o Customer Interface Unit (optional)

Product advantage

- o With advanced high accuracy smart meter;
- o High quality stainless steel, and high IP class for all conditions;
- o Real-time detect the theft of electricity,automatic disconnect and active report the event;
- o If no balance,cut off the power automatically;
- o Load control remotely;
- o With overload and short circuit protection;
- o Lightning/over-voltage protection;

INSTALLATION LAYOUT



- 1-Meter or Concentrator**
- 2-Circuit Breaker(With Motor)**
- 3-Current transformer**
- 4-Terminal box**

SPECIFICATIONS

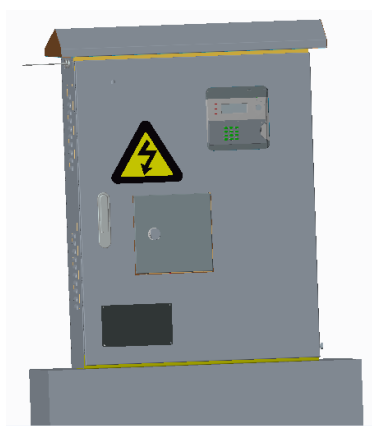
Installation location	Outdoor
Protection Class	IP54
Material	Stainless steel
Rated voltage	230V / 380V / 400V / 415V
Rated current	100A / 200A / 300A / 400A / 500A / 600A
Insulation level	3kV
Circuit breaker	MCCB(With Motor operator)

Dimension(mm)	100A-200A: 680×242×860 (W×D×H)	50kg
	300A-400A: 780×340×1110 (W×D×H)	65kg
	500A-600A: 780×340×1110 (W×D×H)	70kg

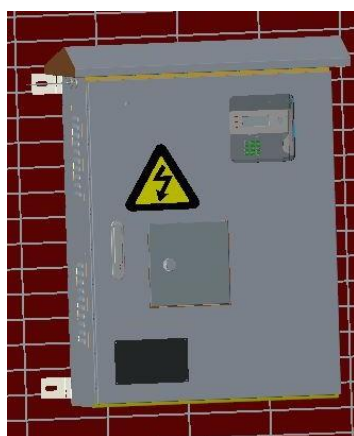
* This data is for reference only

SUPPORTED INSTALLATION

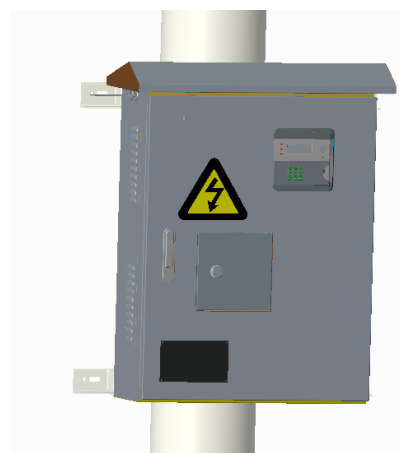
Installation on ground



Installation on wall



Installation on pole



DIMENSION



Kenya(For KPLC)



Uganda(For UMEME)

 | www.hxgroup.cn

Headquarter: 1418-5 Moganshan Road, Shangcheng Industrial Zone,
310011, Hangzhou City, China
Tel: + 86 571 2802 07 67 Fax: +86 571 2802 92 63
Email: market@hxgroup.co



© Copyright 2015, Hexing Group. All Rights Reserved.
Reproduction, use or disclosure to third parties, without express written authority, is strictly prohibited.

Scan Here to Discover More